

Psyche



EVENT
Choose a card from your opponent's hand at random and look at it. Your opponent must play this card during his next turn. If he does not, remove that card from the game.

© Davis-Panzer Productions

Quality Blade



OBJECT
Draw a card at the beginning of your turn if you have Quality Blade in play. You may only have one Quality Blade in play. Now you can wield the Sword of Connor MacLeod, forged by the master craftsmen at Noble Collection. Include this card with your order to receive a 10% discount off this exquisite blade, created just for Highlander™. Orders call 1-800-280-9363. Supplies limited.

© Davis-Panzer Productions

Rachel Ellenstein 3



SITUATION
RACHEL TAKES CARE OF YOUR AFFAIRS WHILE YOU PLAY THE GAME. The next Edge card played is countered, and Rachel Ellenstein is removed from play.

"YOU CAN'T HIDE YOUR FEELINGS FROM ME. I'VE KNOWN YOU TOO LONG."
RACHEL ELLENSTEIN

© Davis-Panzer Productions

Reconnaissance



EDGE
Play when there is a Location in play. Until the end of your turn, you may ignore the effects of that Location.

© Davis-Panzer Productions

Recover Weapon



EVENT
You recover a Disarmed weapon. This card will not recover a broken weapon.

© Davis-Panzer Productions

Right Guard



You may not play a Right or Center attack while this Guard is in play. You may keep this card up and use it again until you play a new defense. This is a Standing Defense.

© Davis-Panzer Productions

Riposte



ATTACK
If the last defense you played this turn was a successful block, this attack may be Hidden.

© Davis-Panzer Productions

Riposte



ATTACK
If the last defense you played this turn was a successful block, this attack may be Hidden.

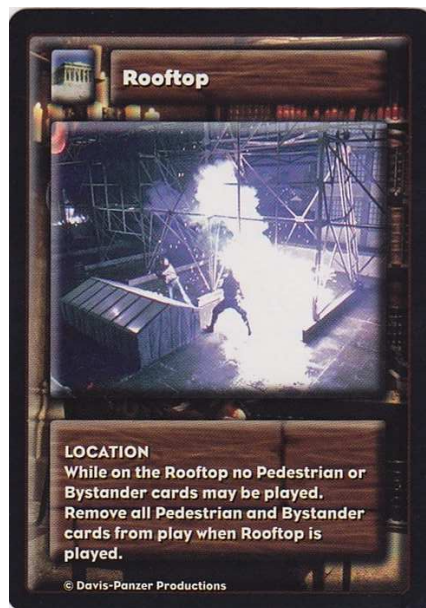
© Davis-Panzer Productions

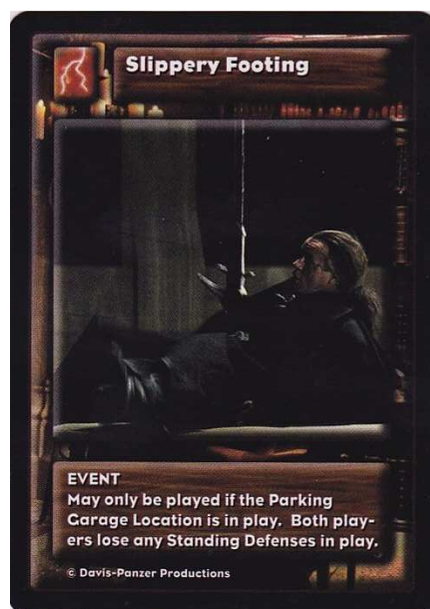
Riposte

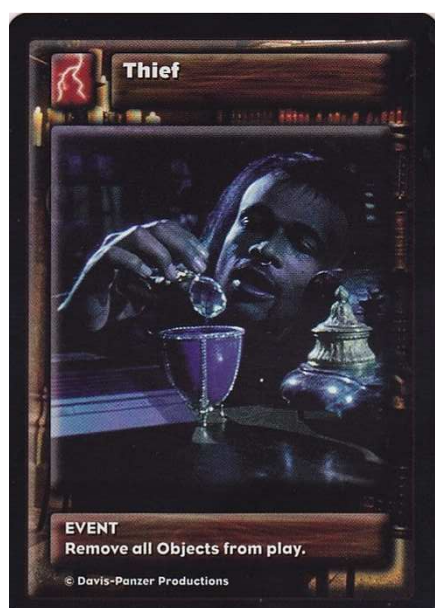
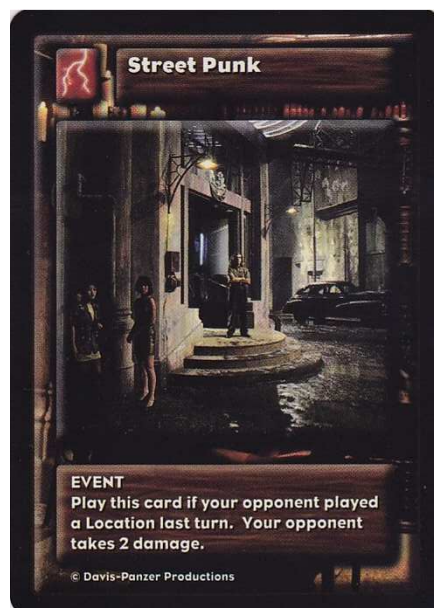


ATTACK
If the last defense you played this turn was a successful block, this attack may be Hidden.

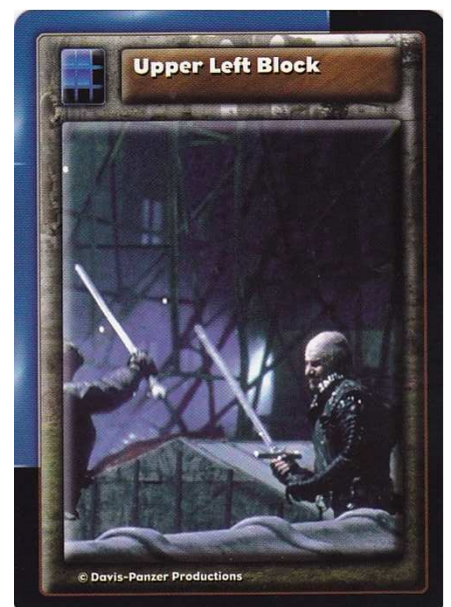
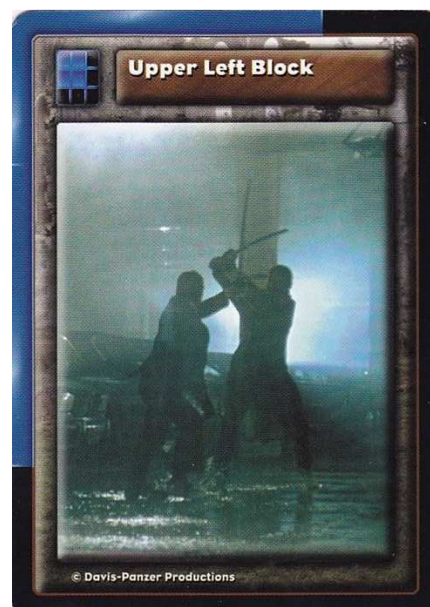
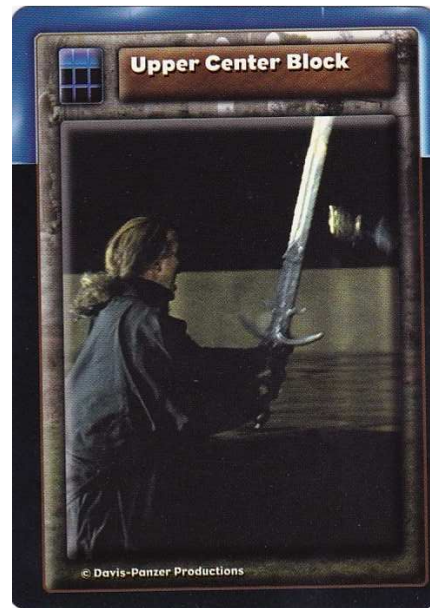
© Davis-Panzer Productions

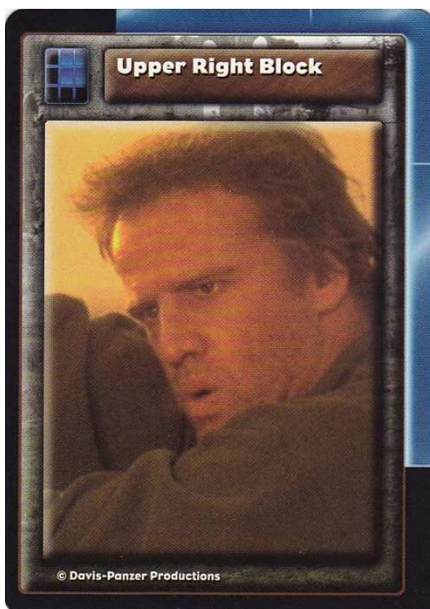
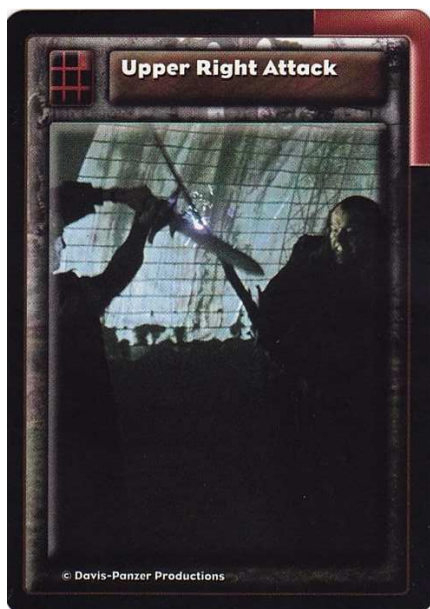
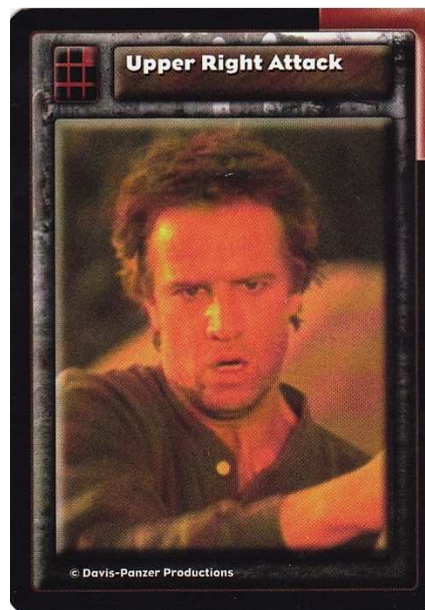


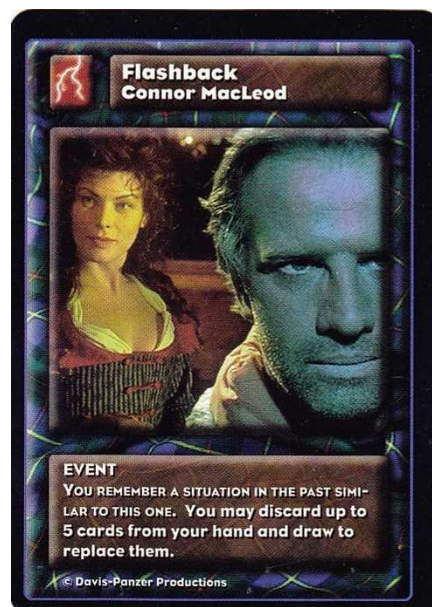












Master's Advice
Connor MacLeod



SITUATION
YOU REMEMBER THE LESSONS OF NAKANO. While Master's Advice is in play, your Ability is increased by 2. You may not have more than one Master's Advice in play at any time.

© Davis-Panzer Productions

Master's Attack
Connor MacLeod 2



SPECIAL ATTACK
RAMIREZ TAUGHT YOU THIS ATTACK. This attack may not be blocked, though it may be dodged. This attack does 2 damage; it may not be a Power Blow.

"USE YOUR BLADE AND YOUR MIND, NOT YOUR MUSCLES!"
RAMIREZ

© Davis-Panzer Productions

Master's Block
Connor MacLeod 2



BLOCK
RAMIREZ TAUGHT YOU THIS SPECIAL DEFENSE. Your next attack this turn may not be blocked, though it may be dodged.

"OPOSE THE FORTE OF YOUR STEEL TO THE ATTACKING FOIBLE!"
RAMIREZ

© Davis-Panzer Productions

Master's Disarm
Connor MacLeod



EVENT
Play in your Defense Phase if you have no weapon and your opponent attacks. You take your opponent's weapon; he is now Disarmed and you may attack this turn. Your opponent may roll to recover your lost weapon, unless it was broken.

© Davis-Panzer Productions

Master's Dodge
Connor MacLeod 3



DODGE
After playing this dodge you may still attack normally.

© Davis-Panzer Productions

Master's Lunge
Connor MacLeod 2



SPECIAL ATTACK
This attack does 3 damage and cannot be dodged, though it may be blocked. This attack may not be a Power Blow.

"BEND YOUR KNEES! CONTROL YOUR ADVANCE! MOVE YOUR FEET!"
RAMIREZ

© Davis-Panzer Productions

Power Blow
Connor MacLeod



EVENT
Play this card in conjunction with an attack. You do not need to make an Exertion to make this attack a Power Blow.

© Davis-Panzer Productions

Slash
Connor MacLeod 2



ATTACK
Your opponent may only play one defense against this attack. The defense played must block or avoid all areas attacked. This attack cannot be a Power Blow. Slash does 1 damage.

© Davis-Panzer Productions

Slash
Connor MacLeod 2



ATTACK
Your opponent may only play one defense against this attack. The defense played must block or avoid all areas attacked. This attack cannot be a Power Blow. Slash does 1 damage.

© Davis-Panzer Productions

